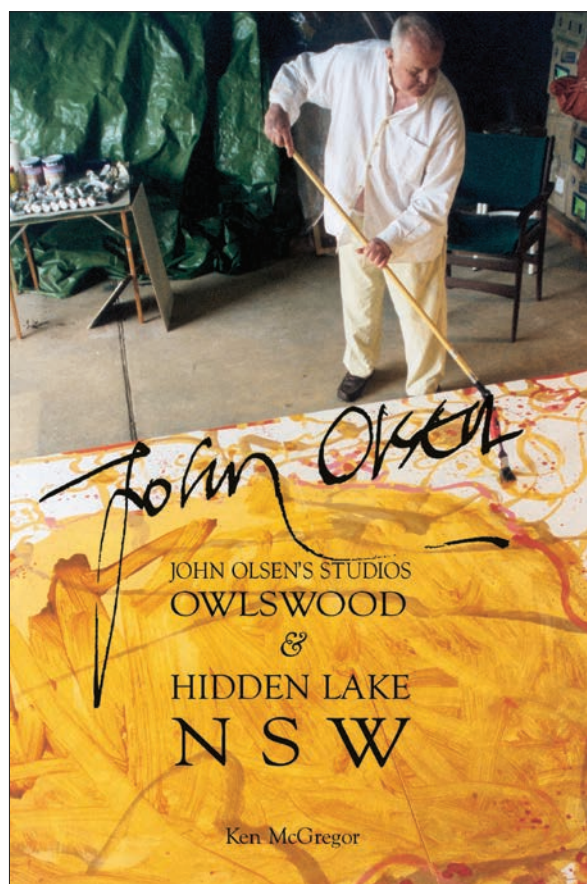


# ASP NEWSLETTER

July 2020

NEW TITLES FROM AUSTRALIAN SCHOLARLY & ARCADIA



**'The studio is where the art of contemplation is incorporated into the process of painting'**  
– John Olsen

## John Olsen's Studios

Owlswood & Hidden Lake, NSW

KEN MCGREGOR

Every artist needs a studio. The photographs in this book show John Olsen working in two studios in New South Wales – 'Owlswood' and 'Hidden Lake'. We see him surrounded by books on artists he admires, the works of inspirational poets and, of course, his favourite Mediterranean cookbooks. Multiple tables are laden, somewhat chaotically, with paints, pencils, crayons and brushes, while he is seen painting at his easel or at a table laid out with precious Torinoko paper.

Author and photographer Ken McGregor reminds us of the significant drawings and prints the artist has created in these two studios.



John Olsen painting *Yellow Sun Over the Yarra*, 2008–09

FORMAT **Hardback** ISBN **978-1-925-984-79-8** RELEASED **23 July** PRICE **\$44**



# John Olsen's Studios

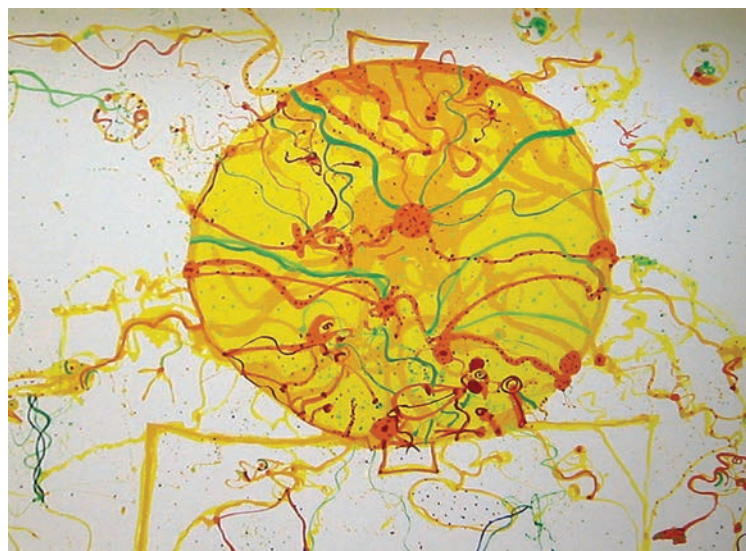
Owlswood & Hidden Lake, NSW

*Right*

John Olsen during painting of *King Sun*

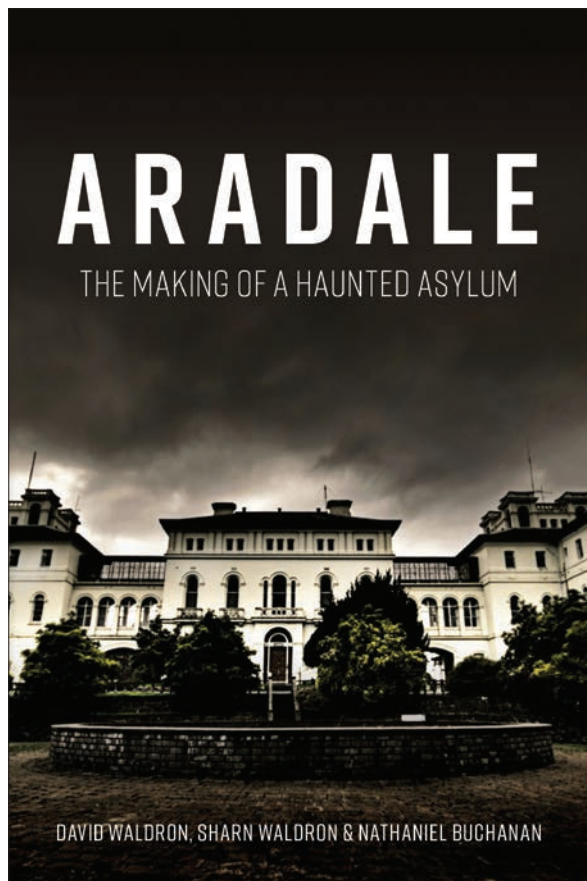
*Below*

*Seafood Paella*, 2018



John Olsen painting *Yellow Sun Over the Yarra*, 2008-09





## Aradale

The Making of a Haunted Asylum

**DAVID WALDRON, SHARN WALDRON  
& NATHANIEL BUCHANAN**

First built in 1867, the remarkable Gothic structure of the former Ararat Lunatic Asylum, colloquially known as Aradale, has overlooked the regional town of Ararat for over 150 years.

Throughout its history it has seen remarkable transformations in the history of Australian psychiatry and western society's treatment of the mentally ill, and it has participated in some of their darkest scandals. Today in popular press, the labyrinthine complex is commonly acclaimed as 'Australia's most haunted building' and is home to a flourishing dark tourism industry boasting tens of thousands of visitors a year. This book explores the history of the former asylum, and examines what is it that makes a place 'haunted' in the popular imagination, and what it is about hauntings that so invariably connects them with problematic histories.



*Above*

Ararat Asylum, 1869. Harrison, W. H & Cooke, A. C. (Albert Charles), 1836–1902 (artist). Ebenezer and David Syme, Melbourne.

<http://handle.slv.vic.gov.au/10381/151373>

*Top Right*

Front View of the Lunatic Asylum (Ararat), 1880.

<http://handle.slv.vic.gov.au/10381/151015>

*Bottom Right*

Back View of the Lunatic Asylum (Ararat), 1880.

<http://handle.slv.vic.gov.au/10381/151017>



## THE SECRET: ROBERT MARTIENSEN



Elizabeth Arthur

## The Secret

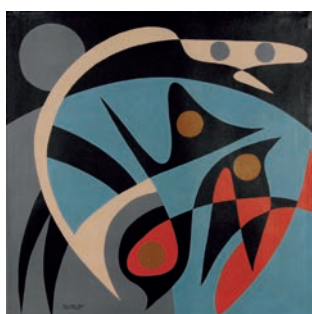
Robert Martiensen

### ELIZABETH ARTHUR

When in 2007 Robert Martiensen was discovered, deceased, in his derelict home in rural South Australia an incredible secret was revealed. Throughout the modest building were stacks of some 7,000 framed and unframed paintings all created after 1990 when this enigmatic, inflexible, highly erudite, but equally eccentric individual was retired from his employment as a primary school mathematics teacher.

Quick thinking and rapid action by the book's author, psychotherapist and art gallery owner Dr Elizabeth Arthur, saved the entire collection from destruction or dispersal to enable this study to be undertaken. Martiensen, an obsessive individual who kept his art secret from the art world, never seeking to exhibit or sell it, might be described as an 'Outsider Artist' and join the catalogue of unusual artistic identities who have been discovered throughout the world.

Robert Martiensen's story, based on interviews with those who knew him, is accompanied by more than 500 colour reproductions of his paintings – works which clearly demonstrate his fluctuating moods and intellectual interests while exhibiting remarkable aesthetic achievement.



*Above*  
3258 *Behold a Silent Message*, 1991

*Left*  
4699 *Early Birds*, 1996

*Right*  
4097 *Our World Today*, 1994





**Previously unknown to the art world,  
his secret is now revealed.**



Above  
Part of the collection

Below  
4220 Departed Voices, 1994







*Top*  
Family groups, Yusef Pasha, early 1980s.

*Above*  
Lion relief carving in the Aleppo Museum, early 1980s.

*Left*  
Father and daughters, Yusef Pasha, early 1980s.



# Traversare

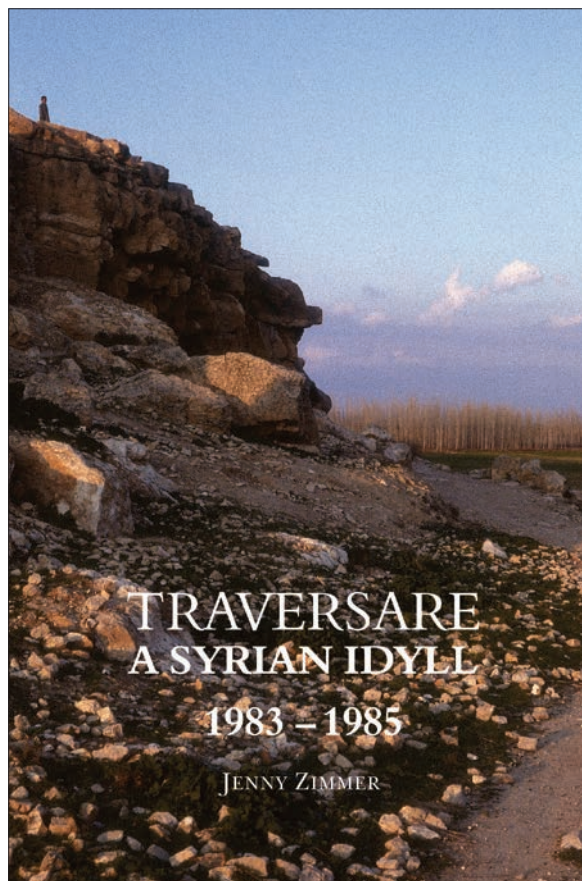
A Syrian Idyll 1983 – 1985

JENNY ZIMMER

**Not so very long ago, a traveller could visit Syria and marvel at its antiquities and the beauty of its countryside, and be charmed by its people.**

This book comprises photographs and personal recollections by a Melbourne University team that was excavating a Bronze Age site known as el Qitar, on the Euphrates River, east of Aleppo. It marks a timeless moment before Syria was engulfed by war, and it will remind the reader of what humanity has lost and has yet to restore.

By artbook publisher Jenny Zimmer, with contributions by Claudia Sagona and Andrew Jamieson of the University of Melbourne and Graeme Clarke of the Australian National University in Canberra, all of whom have undertaken substantial archaeological research in Syria in the early 1980s and beyond.



*Above*  
Citizens of Yusef Pasha, early 1980s.



*Right*  
Entrance to the Hotel Baron, Aleppo, early 1980s.

# ORDER FORM

TITLE	ISBN	PRICE	QTY
John Olsen's Studios Owlswood & Hidden Lake, NSW	978-1-925-984-79-8	\$44	
Aradale The Making of a Haunted Asylum	978-1-925984-91-0	\$29.95	
The Secret Robert Martienssen	978-1-925984-09-5	\$49.95	
Traversare A Syrian Idyll 1983 – 1985	978-1-925984-78-1	\$44	

PLEASE EMAIL TO **enquiry@scholarly.info**

OR

CALL **(03) 9329 6963**